

Parts of a Cell

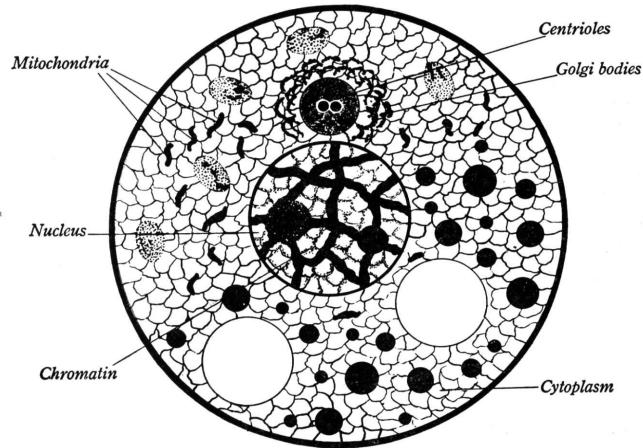


FIG. 26. A Typical Cell

Rap by HipScience
The Human Body 101
Words © Copyright-Naru Kwina

The **CELL MEMBRANE** is where we begin, it lets things out, and keeps things in.

The **CYTOPLASM** is sort of like jelly, it fills the cell and it keeps it steady.

The **NUCLEUS** controls the cell, with the Chromosomes it works quite well.

MITOCHONDRIA makes energy, with food, and oxygen that all cells need.

LYSOSOMES in cells protect, there is no substance they can't catch.

Let me tell you an amazing thing, **ENDOPLASMIC RETICULUM** makes protein.

GOLGI BODIES store the protein, together they're a winning team.

These are the parts of a cell!

